

School District 16 Construction and Renovation Projects

Summer 2007 timelines

New K-3 Elementary School

- May/June 2007 Site work begins
- June 2008 All construction completed



Spring Lake Park High School, Phase I

- March 11 Asbestos abatement begins
- April 2 Demolition begins; Early Childhood moves to new District Services Center (former HealthPartners building)
- April 9 No access to Blue Gym, but access through Community Services entrance until summer
- No visitor bleachers during spring season
- June 8 No access through Community Services entrance or hallway
- Summer Some mechanical work will be done in Fine Arts Center and hallway
- All Community Services area/offices are vacated
- No access to Athletic Department office from east or south
- Mid-August Blue Gym available again
- Christmas Move into new athletic/fine arts addition
- Break

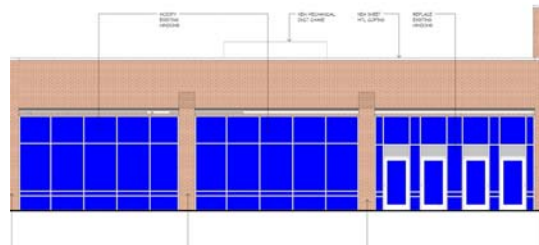


Woodcrest Elementary

- March 11 Exit is created on west side of school building
- April 2 Early Childhood programs addition begins
- Site work begins
- Utility work in courtyard begins
- Much of playground equipment is removed
- June 8 External structure is complete
- Work begins on kitchen
- Work begins on parking area
- Deferred maintenance and renovation work begins on north and west parts of school
- August 24 Deferred maintenance and renovation projects completed
- Early Childhood addition completed
- Kitchen completed
- Site work completed
- Playground reconstructed

Park Terrace Elementary

- June 8 All work begins
- East entrances are closed to staff and public
- No parts of building are open to staff and public
- August 24 All work completed



Westwood Intermediate School

- June 8 Deferred maintenance and renovation project begins
- Boiler project begins
- August 24 All work completed

District Services Center (tentative)

- March 11 Phase I completed. Early Childhood programs move in.
- August 27 Early Childhood programs move to Woodcrest
- October 26 Renovation completed
- October 29 District Offices and services move to new District Services Center site